



Kingsway Community Primary School

Class plan - Year 1 Cycle A



Childhood History

Companions

- o Everyday Materials (Science)
- o Mixing Colours (Art and design)
- o Shade and Shelter (Design and technology)
- o Our Wonderful World (Geography)
- o Human Senses (Science)
- o Funny Faces and Fabulous Features (Art and design)

Planned term

Autumn *Any lessons related to schools do not teach as this is in the Summer term

Suggested text

Old Bear Goldilocks and the Three Bears

Art and design

[Mix It (Y1)] - Colour theory; Colour wheel; Primary and secondary colours. [Funny Faces and Fabulous Features] - Portraiture; Collage

Memorable experience

Childhood past and present. [Shade and Shelter] - Investigating shelters. [Funny Faces and Fabulous Features] - Exploring portraits

Innovate challenge

Childhood knowledge organisers. [Everyday Materials] - Let's investigate focus: Observing, measuring and recording. [Mix It (Y1)] - Colour challenge. [Shade and Shelter] - Designing and building a play den. [Our Wonderful World] - Geographical enquiry. [Human Senses] - Let's investigate focus: Planning and carrying out. [Funny Faces and Fabulous Features] - Collage creators

Mathematics

Numbers to 10; addition and subtraction within 10; shape and patterns; numbers to 20; addition and subtraction within 20

Music

Hey You! Rhythm in the way we walk and banana rap

Design and technology

[Shade and Shelter] - Investigating existing products; Designing and making shelters and dens; Prototypes; Safety rules; Materials.

[Funny Faces and Fabulous Features] - Stitching to join materials; Embellishing

History

Historical vocabulary; Historical artefacts; Timelines; Everyday life and childhood in the 1950s; Significant events – Queen's coronation; Enquiry

Religious education

Are Rosh Hashanah and Yom Kippur important to Jewish children? What gifts might Christians in Leamington Spa have given Jesus if he had been born here rather than in Bethlehem?

Science

[Everyday Materials] - Materials; Natural materials; Human-made materials; Grouping materials; Properties of materials; Venn diagrams; Comparing and testing materials; Working scientifically – Identifying and classifying, Observing changes over time, Comparative test, Pattern seeking, Research. [Shade and Shelter] - Naming everyday materials; Properties and uses of materials.

[Human Senses] - Humans; Labelling body parts; Counting body parts; Similarities and differences in humans; Five senses – sight, hearing, touch, smell, taste; Senses and danger; Sensory loss and assistive tools; Sense of touch investigation; Working scientifically – Identifying and classifying, Comparative test, Pattern seeking, Research

Computing

Podcasting Keezy Animation Digital Literacy: Self image and identity; online relationships; online reputation

English

Traditional fairy tales; labels, lists and captions; recounts; poetry

Geography

Settlements; Changes over time. [Our Wonderful World] - Physical and human features; Picture maps; Cardinal compass points; Equator and hemispheres; Continents; Oceans; Countries and capital cities of the UK; Protecting natural environments; Fieldwork

Personal, social and health education

Being me in my world Celebrating difference



Bright Lights, Big City **Geography**

Companions

- Rain and Sunrays **Art and design**

Planned term

Spring

Suggested text

Claude in the City Dick Whittington

Art and design

Drawing

Memorable experience

Local landmarks

Innovate challenge

Marley's trip to London

Mathematics

Time; exploring calculation strategies within 20; numbers to 50; addition and subtraction within 20; fractions; measures (length and mass)

Music

In the groove Round and Round

History

Significant event – Great Fire of London

Religious education

How do different religions think we should look after the world? Why was Jesus welcomed like a king or celebrity by the crowds on Palm Sunday?

Computing

Data Presentations Digital Literacy: Online bullying; health, wellbeing and lifestyle; managing online information

English

Information texts; newspaper reports; postcards; narrative; poetry

Geography

Local landmarks; Countries and capital cities of the UK; Physical features of the UK; Settlements; Human features; Weather and seasons; London – a capital city; Landmarks; Aerial images; Maps; Directions – locational and directional language; Geographical similarities and differences

Personal, social and health education

Dreams and goals Healthy Me



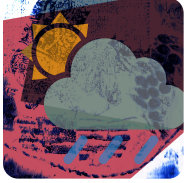
Seasonal Changes **Science**

Innovate challenge

Let's investigate focus: Asking and answering questions

Science

Seasons; Seasonal changes in deciduous and evergreen trees; Seasonal changes in animals; Weather; Seasonal weather; Day length; Investigating the Sun; Measuring wind; Measuring temperature; Measuring precipitation; Weather forecasting; Working scientifically – Observing changes over time, Identifying and classifying, Pattern seeking, Comparative test, Research



Rain and Sunrays **Art and design**

Art and design

Motifs; Line and shape; Texture; Collagraphy

Memorable experience

Weather motifs

Innovate challenge

Creating weather collagraphs



Taxi! **Design and technology**

Memorable experience

Investigating wheels, axles and chassis

Innovate challenge

Making a London taxi

Design and technology

Mechanisms – wheels, axles and chassis



School Days **History**

Companions

- o Plant Parts **Science**
- o Animal Parts **Science**
- o Street View **Art and design**
- o Chop, Slice and Mash **Design and technology**

Planned term

Summer

Suggested text

Whiffy Wilson: The Wolf who wouldn't go to school – Caryl Hart Little Red Riding Hood

Art and design

[Street View] - 3-D murals; Buildings; Significant people – James Rizzi

Memorable experience

Our school's history. [Street View] - Exploring street views. [Chop, Slice and Mash] - Investigating sources of food

Innovate challenge

Planning an assembly. [Plant Parts] - Let's investigate focus: Reporting and concluding. [Animal Parts] - Let's investigate focus: Observing, measuring and recording. [Street View] - Mural makers. [Chop, Slice and Mash] - Designing and making a supermarket sandwich

Mathematics

Numbers 50 to 100 and beyond; addition and subtraction; money; multiplication and division; measures (capacity and volume)

Music

Your imagination Reflect, rewind, replay

Design and technology

[Chop, Slice and Mash] - Sources of food; Food preparation techniques; Hygiene rules; Designing and making salads and sandwiches

History

Historical vocabulary; Historical artefacts; Timelines; Present day schools; Our school; Victorian era; Victorian schools; Significant people – Samuel Wilderspin

Religious education

What do different religions believe is important about friendship? Is Shabbat important to Jewish children?

Science

[Plant Parts] - Wild and garden plants; Seasonal changes; Plant parts; Seeds and bulbs; Investigating leaves; Importance of plants; Working scientifically – Identifying and classifying, Observing changes over time, Pattern seeking, Research, Comparative test. [Animal Parts] - Animals' body parts; Animal groups – amphibians, birds, fish, invertebrates, mammals, reptiles; Carroll and Venn diagrams; Pets; Carnivores, herbivores and omnivores; Earthworms; Working scientifically – Identifying and classifying, Comparative test, Pattern seeking, Research

Computing

Programming Video Creation Digital Literacy: Privacy and security; copyright and ownership

English

Stories with familiar settings; diary; instructions; formal letters' poetry

Geography

Fieldwork; Human and physical features; Maps; Local environment; Changes over time

Personal, social and health education

Relationships Changing me

Relationships Changing me